

INSTRUMENT
APPROACH
CHART - ICAO

AERODROME ELEV 741 FT
HEIGHTS RELATED TO
THR 12 ELEV 718 FT

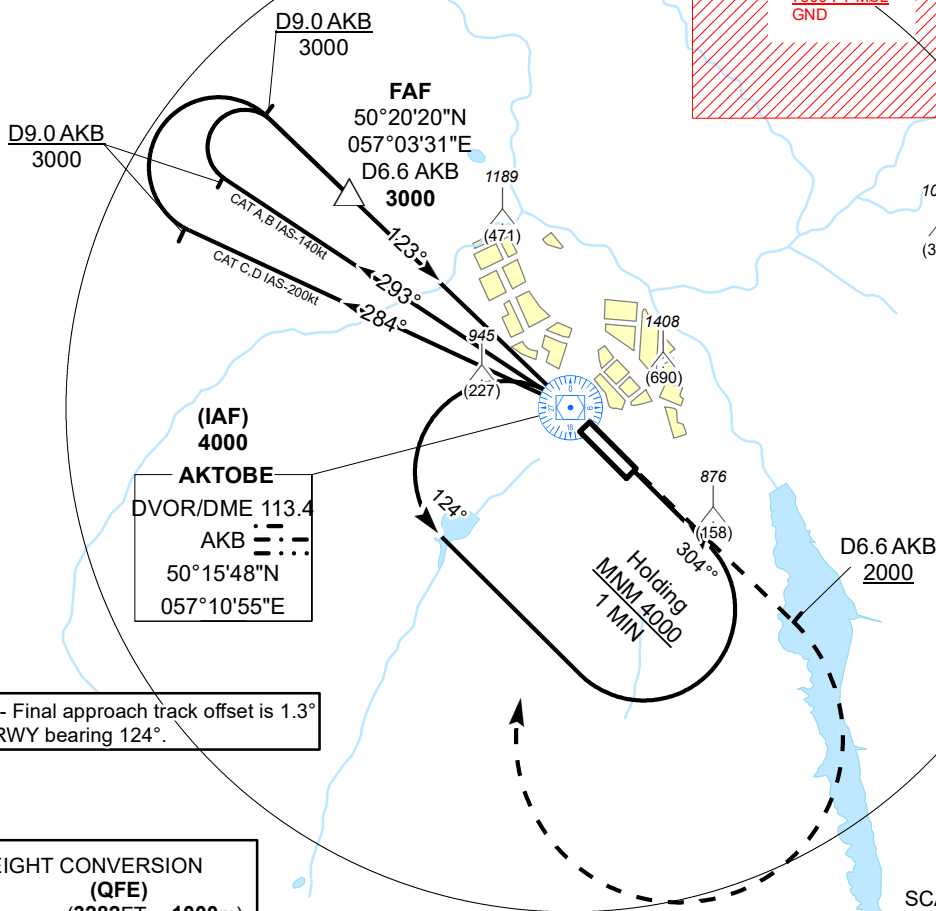
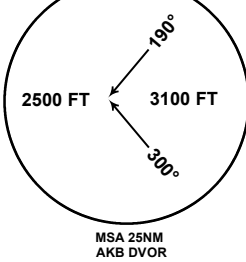
AKTOBE TOWER 120.90
AKTOBE ATIS (EN) 126.0
AKTOBE ATIS (RU) 127.80

AKTOBE
VOR/DME
RWY 12

DIST IN NM
ALT, ELEV IN FT
BRG ARE MAGNETIC
VAR11°E

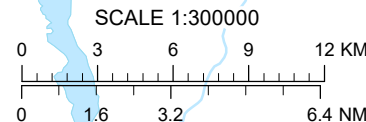
Alt SET: hPa (mm on req),
QNH (QFE on req)

UAR43
7300 FT MSL
GND

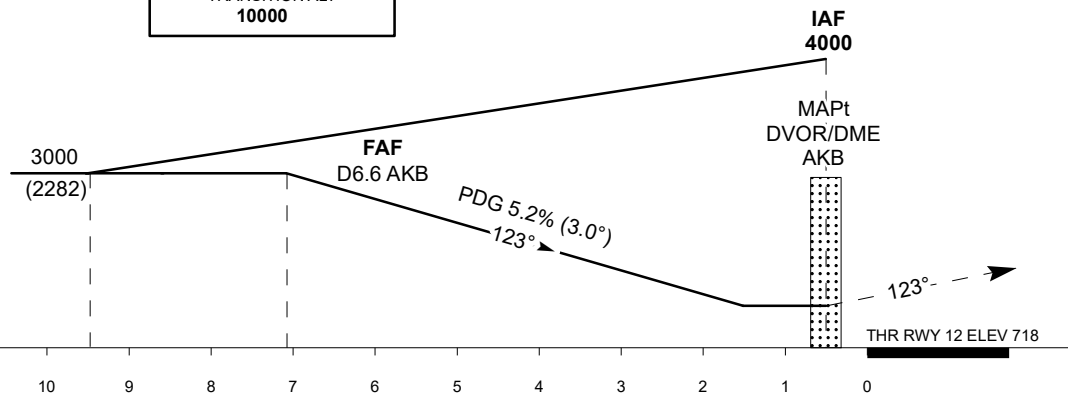


Note. - Final approach track offset is 1.3°
from RWY bearing 124°.

ALT/HEIGHT CONVERSION	
QNH	(QFE)
4000	(3282FT - 1000m)
3000	(2282FT - 696m)
2000	(1282FT - 391m)



TRANSITION ALT
10000



MISSED APPROACH
Climb on track 123°,
at 2000 or above,
outbound to D6.6 AKB,
turn RIGHT to AKB,
Climb initially to 3000,
then as directed by ATC.
RADIO FAILURE: in the case
of RCF climb to 4000 to AKB
and join to holding pattern.
Missed approach turn speed
limited to 240 kt IAS maximum.

Aircraft Category		A	B	C	D	DIST to THR	7.1	6	5	4	3	2	1
Straight-in Approach OCA/H						DME AKB	6.6	5.5	4.5	3.5	2.5	1.5	0.5
	VOR/DME	1210(490)	1210(490)	1210(490)	1210(490)	ALTITUDE	3028	2677	2359	2041	1722	1404	1086
						HEIGHT	(2310)	(1959)	(1641)	(1323)	(1004)	(686)	(367)

Aerodrome Operating Minima MDH ft x RVR(CMV)	VOR/DME					GS	kt	80	100	120	140	160	180
						FAF-MAPt 6.6NM	min:sec	4:57	3:58	3:18	2:49	2:29	2:12
						Desc.Rate(5.2%)	ft/min	420	530	630	740	840	950

AKTOBE (UATT)
VOR/DME RWY12

AERONAUTICAL DATA TABULATION

VOR approach to RWY12 from AKB DVOR/DME	
Fix/point	Coordinates
AKB DVOR/DME (IAF)	50° 15' 48.3"N 057° 10' 54.8"E
D6.6 AKB (FAF)	50° 20' 20.3"N 057° 03' 31.2"E
THR RWY12	50° 15' 23.08"N 057° 11' 22.49"E
Final approach descent angle is 3.0°	